

Plan BayArea

Sustainable Communities Strategy: Overview

Air and Waste Management Association
Specialty Conference

Ezra Rapport, Executive Director
Association of Bay Area Governments

September 21, 2011

Senate Bill 375

- Adopted in 2008
- Requires regional agencies to develop a Sustainable Communities Strategy (SCS)
- SCS identifies areas to house all of the region's population, coordinates with transportation
- Enhance housing, employment and the economy; reduce greenhouse gases



Building on existing regional efforts

Priority Development Areas

200 city nominated-areas in over 60 cities and counties

- Within existing community
- Near transit
- Planning for housing



Priority Conservation Areas

- Identify resource lands
- Enhance rural areas



Sustainable Communities Strategy: Land Use Criteria

- Complete Communities
- Employment
- Transit
- Land availability
- Residential densities
- In-commuters



Land Use: Alternative Scenarios

- **Unconstrained resources**

- 1 Initial Vision Scenario

- 2 Core Concentration Scenario

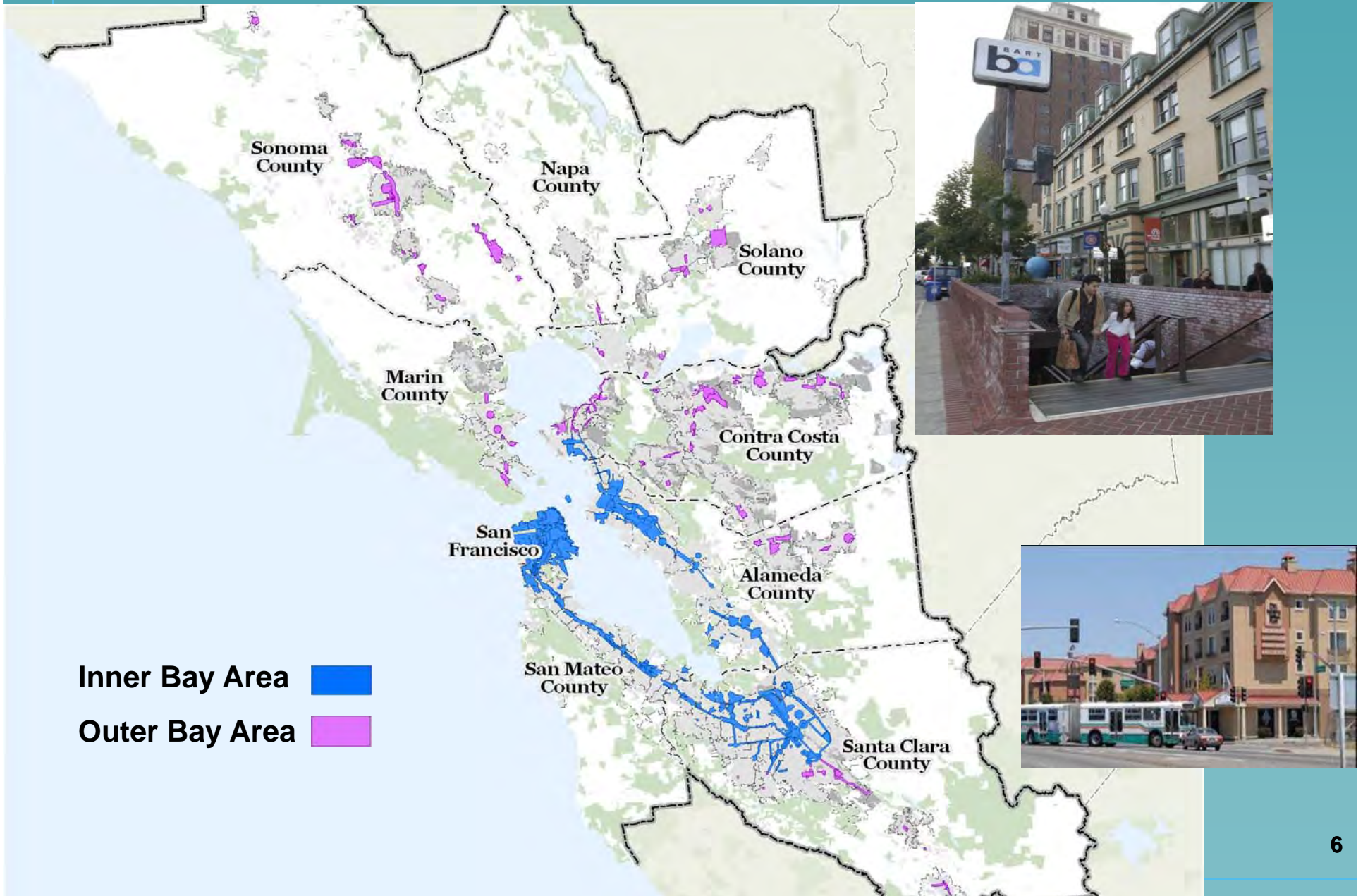
- **Constrained resources and reasonable planning**

- 3 Focused Growth Scenario

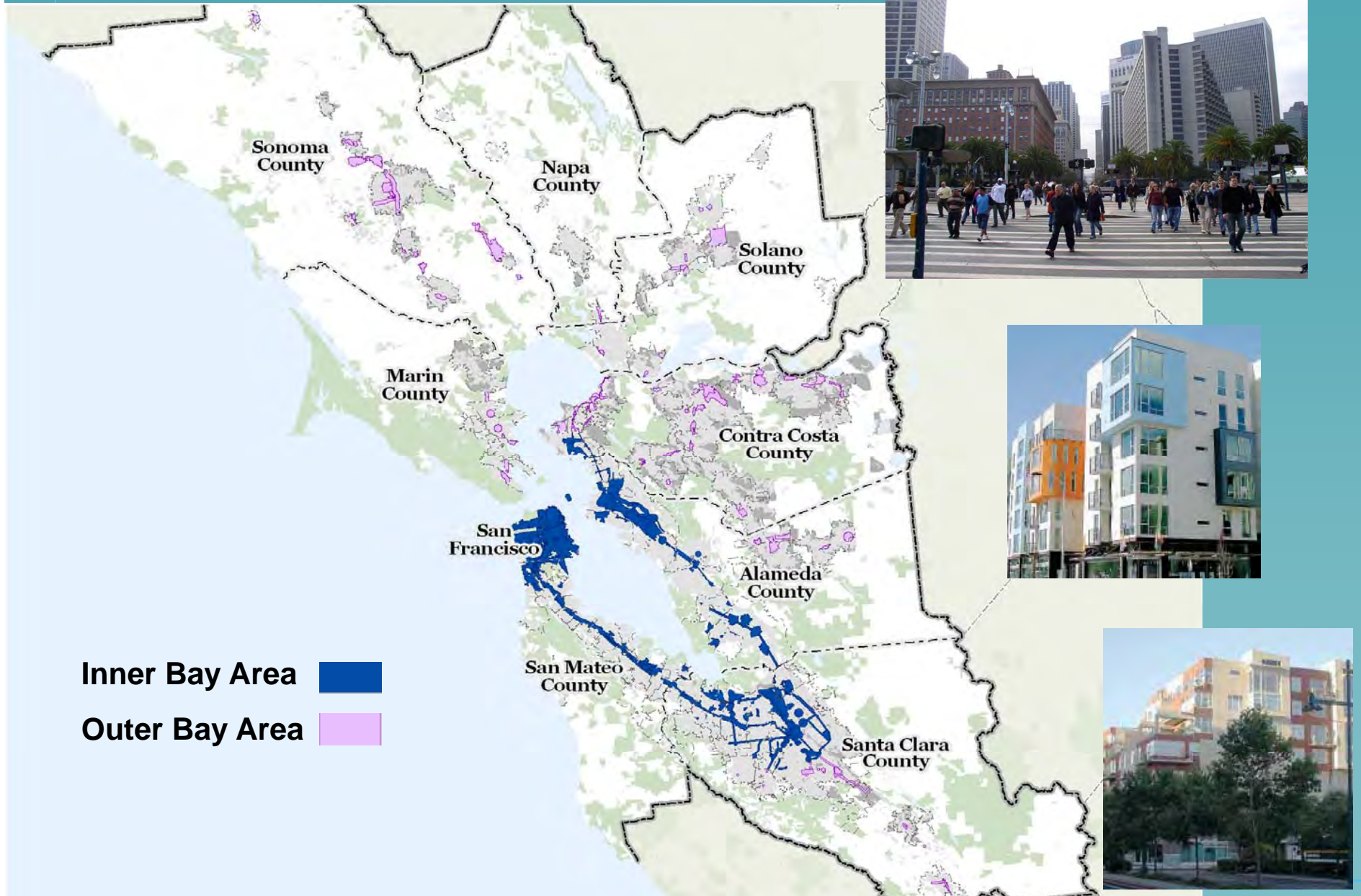
- 4 Core Concentration Scenario

- 5 Outer Bay Area Growth Scenario

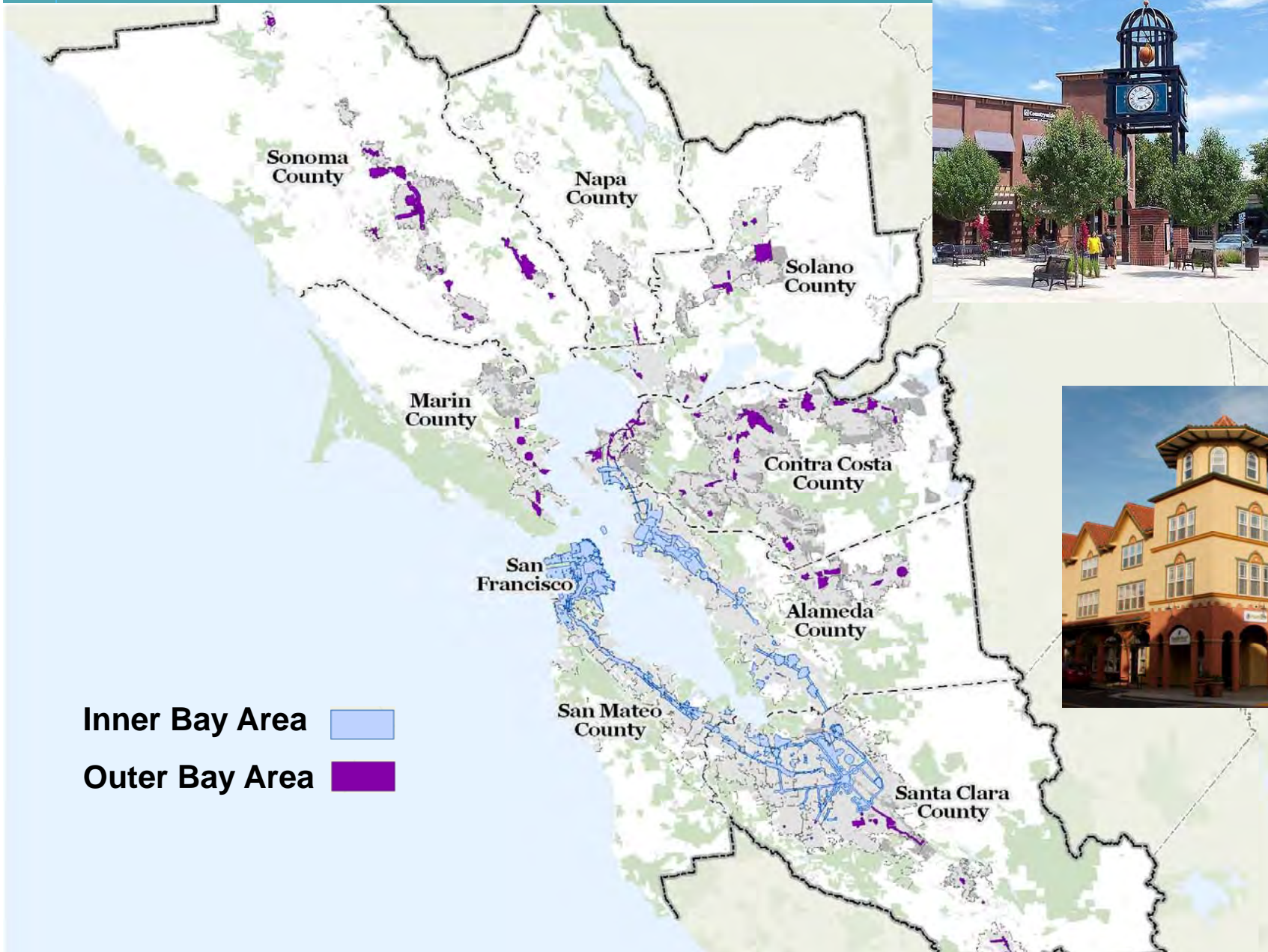
3 Focused Growth Scenario



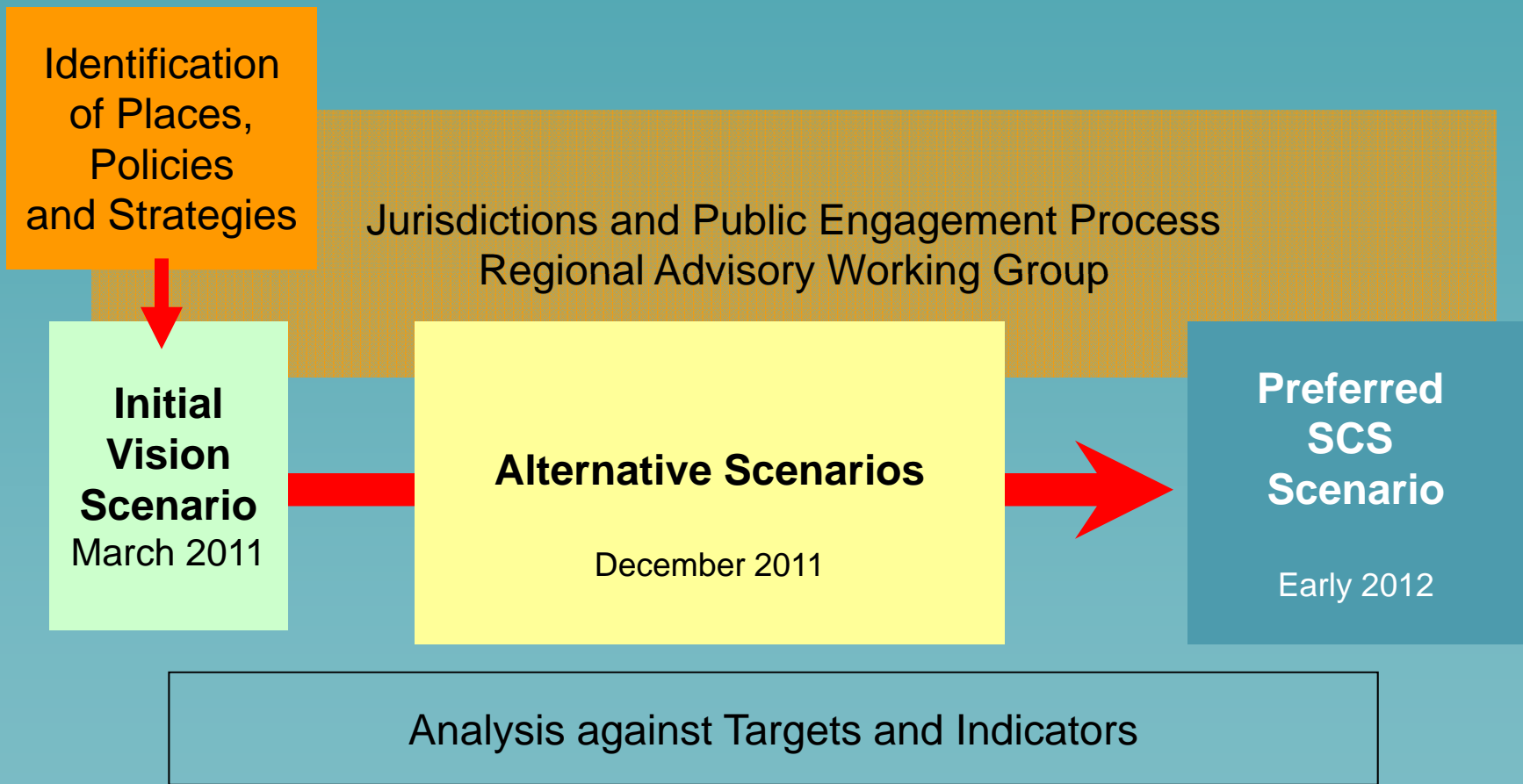
4 Core Concentration Scenario



5 Outer Bay Area Growth Scenario



Process: SCS Scenarios



Sustainable Communities Strategy Timeline

- December 2011: Release SCS alternative scenarios analysis
- May 2012: Approval of SCS preferred scenario
- April 2013: Adoption of Regional Transportation Plan and Sustainable Communities Strategy